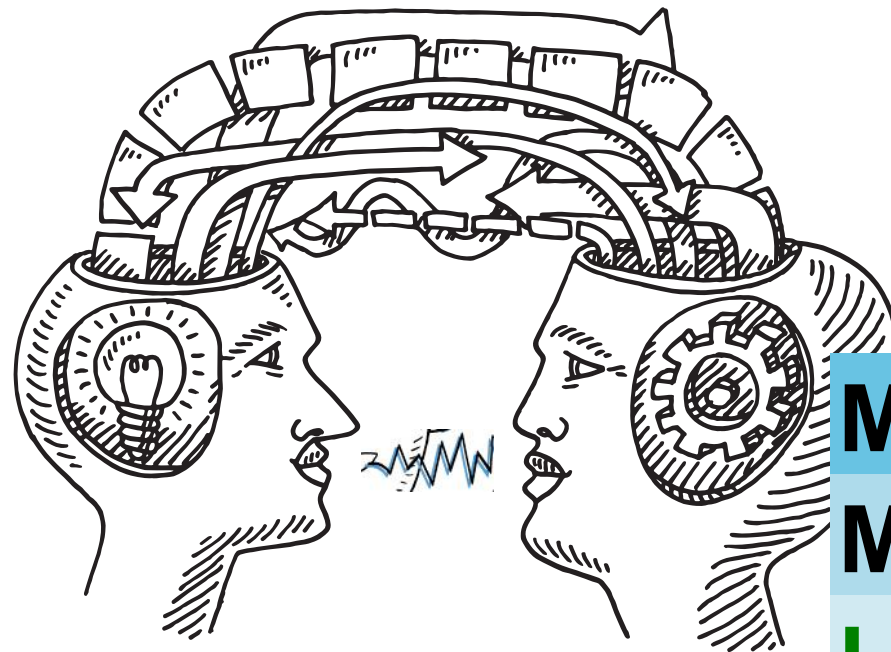
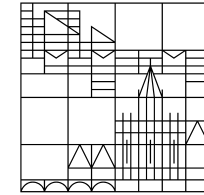


Universität  
Konstanz

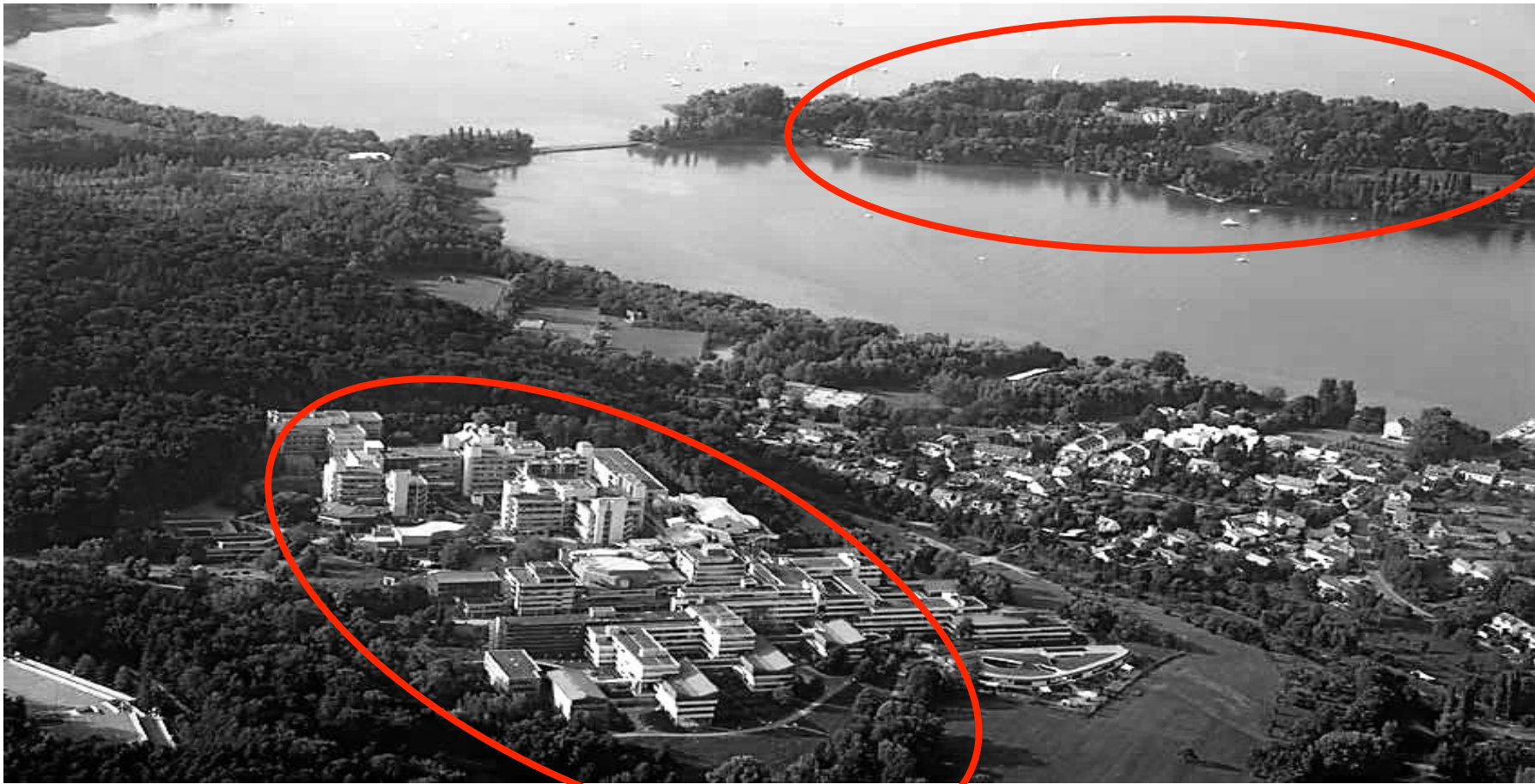


**M.A. Linguistics**  
**M.A. Speech and  
Language Processing**

Prof. Bettina Braun, Prof. George Walkden

# Study between Lake and Alps

- located outside the city of Konstanz on the Giessberg hill
- next to Lake Constance with a view on the Alps



# M.A. Linguistics and M.A. Speech and Language Processing (SLP)

Degree	<ul style="list-style-type: none"><li>• Master of Arts</li></ul>
Programme start	<ul style="list-style-type: none"><li>• Winter semester</li><li>• Summer semester</li></ul>
Period of study	<ul style="list-style-type: none"><li>• 4 semesters</li></ul>
Application period	<ul style="list-style-type: none"><li>• 15.01. and 15.06.</li></ul>
ECTS	<ul style="list-style-type: none"><li>• 120</li></ul>

# Why study Linguistics?

Our study programmes focus on

- the **basic structures** across languages that underlie human speech and linguistic knowledge
- **interfaces** between core areas (e.g., Morphology-Syntax, Prosody-Pragmatics)
- the use of **empirical linguistic data** in theory construction and evaluation
- how the general theories and directions in linguistics research are taking shape in **individual languages**



# Why study **Speech and Language Processing?**

In addition to linguistic core areas, interfaces and empirical approach, the SLP focuses on

- how linguistic knowledge is **learned, processed and represented** in the human brain
- how linguistic knowledge can be applied in creating **tools for machine language processing** (text understanding, generation, translation, question-answering...)



## Interests and skills

- enthusiasm for language(s) and their structure(s)
- ability to think formally, to generalize, and to form hypotheses
- very good English skills

for M.A. **Speech and Language Processing**

- willingness to acquire additional practical skills
  - programming
  - experiment design

# The Department of Linguistics



## Hosts researchers in the areas of:

- English and Germanic Language and Linguistics (English, German, Icelandic...)
- Romance Languages and Linguistics (French, Italian, Spanish, Basque, European and Brazilian Portuguese...)
- Slavic Linguistics (Russian....)
- South Asian Linguistics and Chinese

## Major research areas are:

- Core areas of Linguistics and their interfaces (Phonetics, Phonology, Morphology, Syntax, Semantics, Pragmatics)
- Experimental Linguistics (Neurolinguistics, Psycholinguistics, Language Acquisition)
- Computational Linguistics
- Historical Linguistics

# Professors



Tanja Kupisch



Theo Marinis



George Walkden



Georg Kaiser



Carsten Eulitz



Miriam Butt



Regine Eckardt



Maribel Romero



Maria Biezma



Bettina Braun



Nicole Dehé



# Why study **Linguistics** and **SLP** at the University of Konstanz?

Focus on theory and methods

Different study specialisations

Access to language laboratories

Research-oriented classes

Study abroad / Internship

# General degree structure

Core area of linguistics (18cr)

semester I & II

Methods in linguistics (12cr)

semester II

Area of Specialization  
(66cr in Linguistics, 69cr in SLP)

semester II-IV

Research, Master Thesis and oral exam  
(24cr in Linguistics, 21cr in SLP)

semester IV

# Areas of specialization in the M.A. Linguistics

Area of Specialization  
(66cr in Linguistics)

- General Linguistics
- English Linguistics
- German and Germanic Linguistics
- Romance Linguistics
- Slavic Languages and Linguistics

# Areas of specialization in the M.A. SLP

Area of Specialization  
(69cr in SLP)

- Foundations in Human and Machine Language Processing (18cr)
- Specialization in Human or Machine Language Processing (18+9cr)
- Practical and experimental research (6c)
- Neighbouring areas (18cr)

# Internship and Study abroad

## Internships

In the M.A. **Linguistics**: an internship is not compulsory  
In the **M.A. SLP**: an internship during your studies is compulsory (but this can also be done at the university).

If you are interested in gaining practical experience, the staff of our department and the university's Career Service are here to help you find a suitable placement.



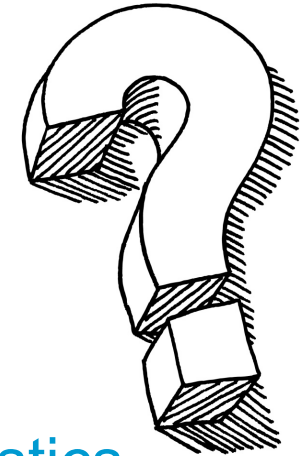
## Study abroad

Generally, you can include a study abroad stay in your master's programme.

The university promotes study abroad via the Erasmus+ programme and numerous other exchange programmes.



# Admission requirements



## For the M.A. Linguistics and the M.A. SLP:

- a three-year study programme in the field of linguistics (minimum degree: BA or equivalent) at an institution of higher education or vocational college
- Qualifying degree with the grade "good" (2.5) or better

Language requirements for the M.A. SLP: Documentation of advanced English language skills (spoken and written English), level B2 of the Common European Reference Framework

→ M.A. SLP can be studied in English

# Language Skills M.A. Linguistics

Generally:

- German language skills, level **DSH-2 or TestDaF 4**, or equivalent
  - English language skills, level **B2** of the Common European Reference Framework (CERF)
- Dependent on specialisation, additionally
- "English Language and Linguistics": English **C1**
  - "Romance Languages and Linguistics": **C1** in the corresponding language.
  - "Slavic Languages and Linguistics": Russian **C1**

# Next application period

**Application deadline summer term:  
02.05.2018- 15.06.2018**





# Application

## – Three-step-procedure:

– online registration

– online application

<https://www.uni-konstanz.de/en/study/before-you-study/application-and-enrolment/masters-degree/>

– send application to the University

– generate and print out the “application to admission” form and send all required application documents to the university

– **Track your application status, use this contact:** [www.studium.uni-konstanz.de/en/contact/](http://www.studium.uni-konstanz.de/en/contact/)

Track your application:  
[studium@uni-konstanz.de](mailto:studium@uni-konstanz.de)



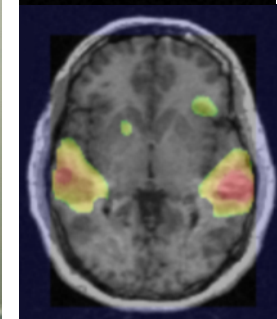
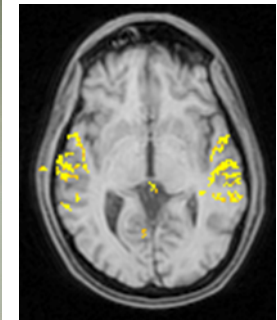
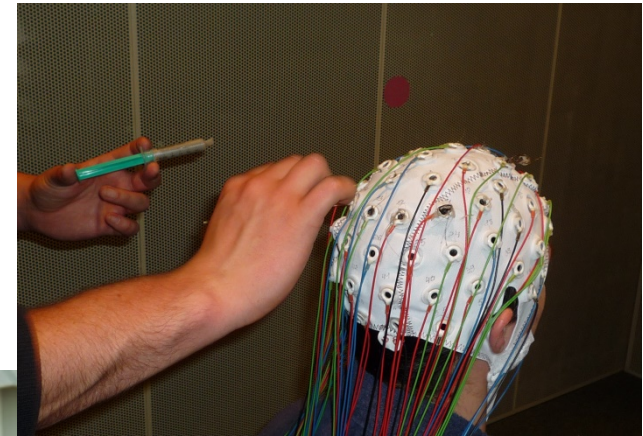
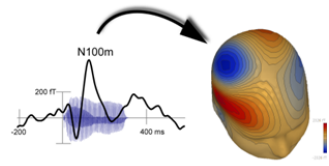
**Application deadline:**  
Summer term:  
2.5. – 15.6.  
Winter term:  
4.12. – 15.1.

# Our labs and facilities:

## Computational Lab



## Neurolinguistics Lab



# Our labs and facilities:

**Phonlab**



**Baby Speech**

**Lab**



**Psycholinguistics Lab**

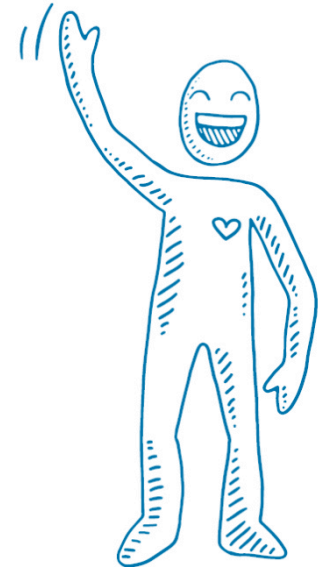


<https://www.ling.uni-konstanz.de/en/research/department-and-research-colloquium/laboratories/>

# Prospects and Opportunities

## Fields in which the structure of language plays role:

- academic and industrial research
- natural language processing
- communications and media outlets
- education
- data science and digital humanities



# Prospects and Opportunities

## The master's programmes offer foundations for work in:

- teaching and scientific research at universities and other research facilities
- public authorities or adult education
- editors in publishing and the mass media, libraries, archives, documentation centres, with publishers, radio and television companies
- national and international organisations, associations and enterprises (i.e. in companies dealing with natural language technology)

# Further information

Geisteswissenschaftliche Sektion  
Department of Linguistics



Fachschaft:

<https://www.ling.uni-konstanz.de/fachschaft/>

Department   Research   Studies   Advising and Services



Welcome to the Department of Linguistics homepage!

"Questions at the Interfaces" Research Group

Association of Konstanz Linguistics Laboratories (LingLab)

Course offerings Winter Semester 2017-18

Links

Menü öffnen

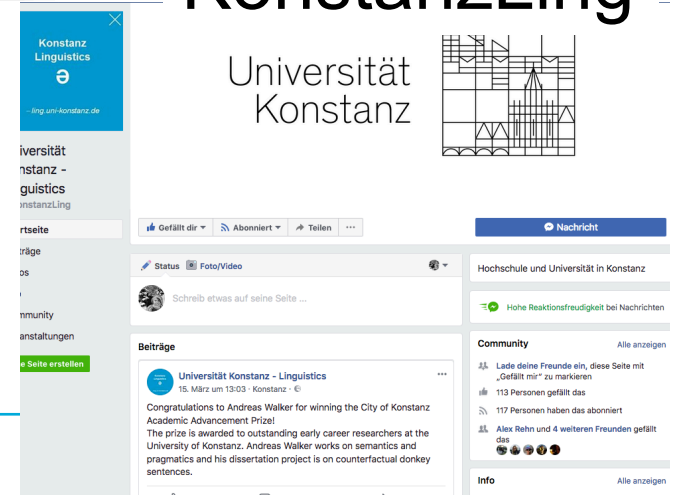


@KonstanzLing

Follow us on Facebook!

KonstanzLing

<https://www.ling.uni-konstanz.de/en/>



# Advisory service

Need advice?

Contact

us!

**Bettina Braun**

Tel: +49-7531-88-2386

[bettina.braun@uni-konstanz.de](mailto:bettina.braun@uni-konstanz.de)